

Vauxhall High School
Integrated Science Worksheet Grade 10
March 2020

Instructions: Answer ALL questions

1. Figure 2 shows a typical plant cell.

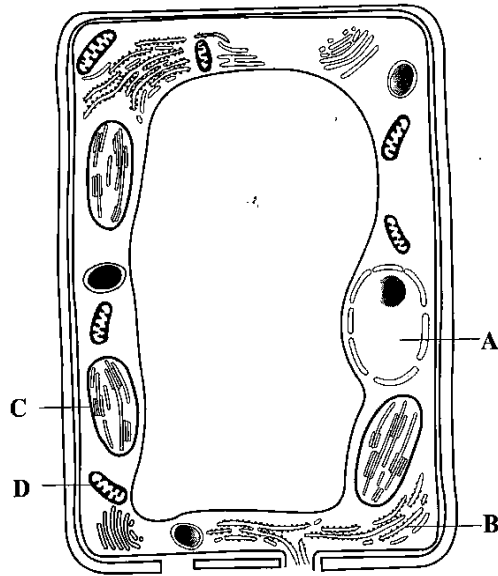


Figure 2. A typical plant cell

(a) (i) Name the organelles labelled A and B in Figure 2.

A

B

(2 marks)

(ii) State ONE function of EACH of the organelles labelled C and D.

Function of C

.....

Function of D

.....

(2 marks)

(b) You are required to view a virus and a typical plant cell under a microscope.

(i) Identify ONE feature that is common to both a virus and a typical plant cell.

.....

(1 mark)

(ii) Suggest TWO differences that would be observed between the virus and the typical plant cell.

.....

.....

(2 marks)

(c) Figure 3 shows three different types of cells found in the human body.

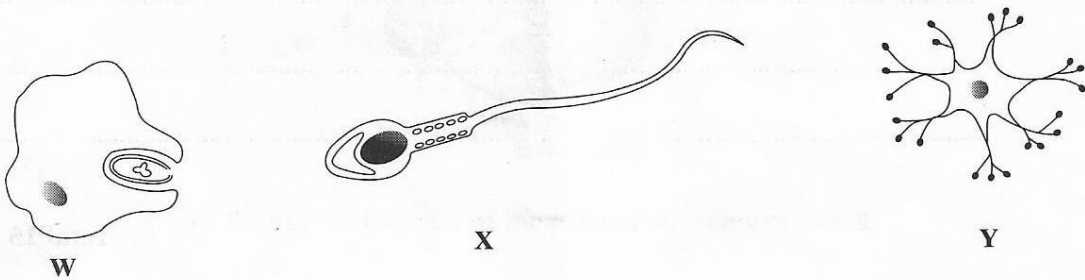


Figure 3. Types of cells found in the human body

(i) Name the cell labelled Y in Figure 3.

.....

(1 mark)

(ii) Are the cells in Figure 3 classified as differentiated or undifferentiated?

.....

(1 mark)

Total 15 marks

2. (a) Safety is very important in any science laboratory. In the following illustration, identify THREE safety hazards and suggest ONE safety practice for EACH hazard identified. (6 marks)



Figure 7. A science laboratory

- (b) State ONE method that can be used to extinguish EACH of the following fires:
- Bush fire
 - Electrical fire
- (2 marks)
- (c) A pot of oil accidentally catches fire in a restaurant. The chef quickly grabs a water hose to extinguish it. Is this an appropriate method to extinguish the fire? Explain your answer. (2 marks)
- (d) State TWO possible causes of electrical shocks and identify appropriate methods to prevent them. (4 marks)
- (e) Identify the hazard represented by the safety symbol in the illustration below.



(1 mark)

Total 15 marks